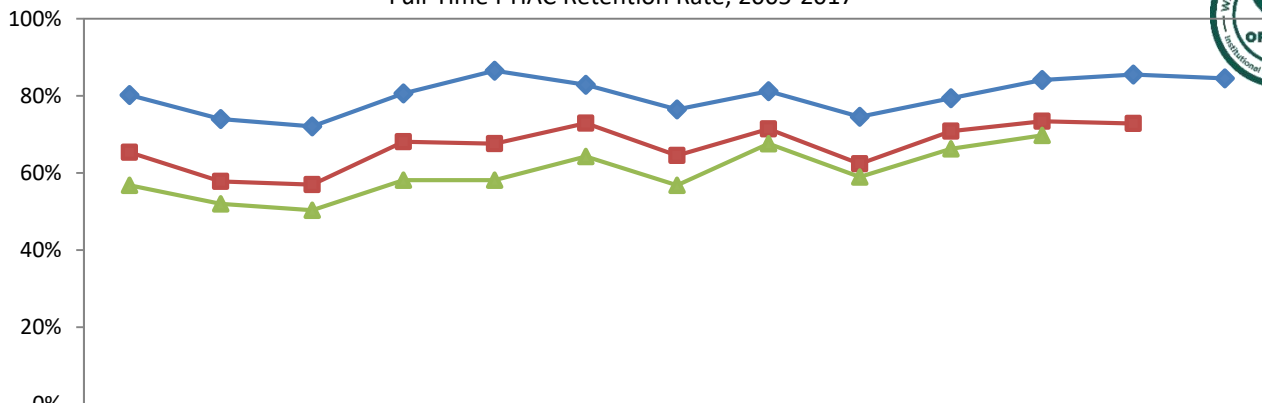


College of Engineering

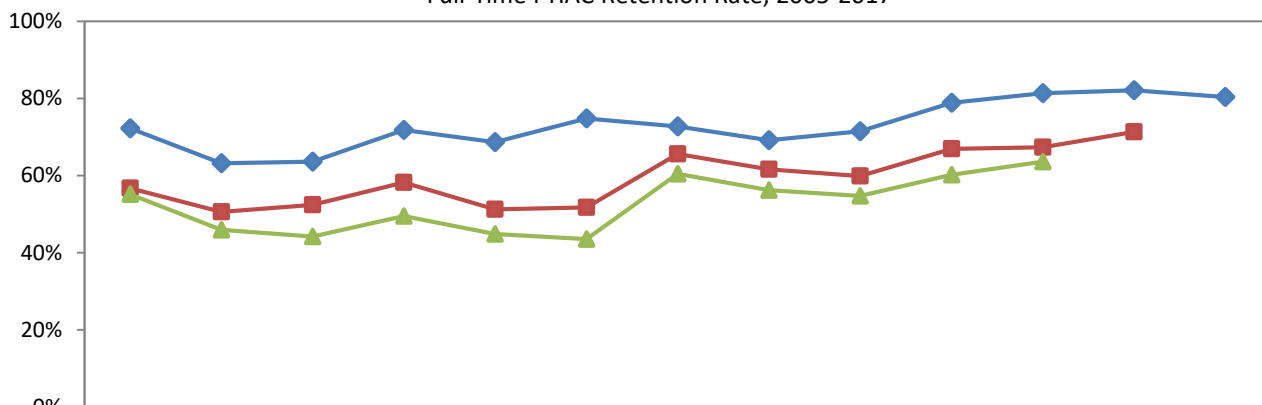
Full-Time FTIAC Retention Rate, 2005-2017



2nd Yr	80.2%	74.0%	72.1%	80.6%	86.5%	82.9%	76.5%	81.2%	74.6%	79.4%	84.1%	85.5%	84.5%
3rd Yr	65.4%	57.8%	57.0%	68.1%	67.6%	72.9%	64.5%	71.4%	62.4%	70.8%	73.4%	72.8%	
4th Yr	56.8%	52.0%	50.3%	58.1%	58.1%	64.3%	56.8%	67.6%	59.0%	66.3%	69.8%		

School of Business

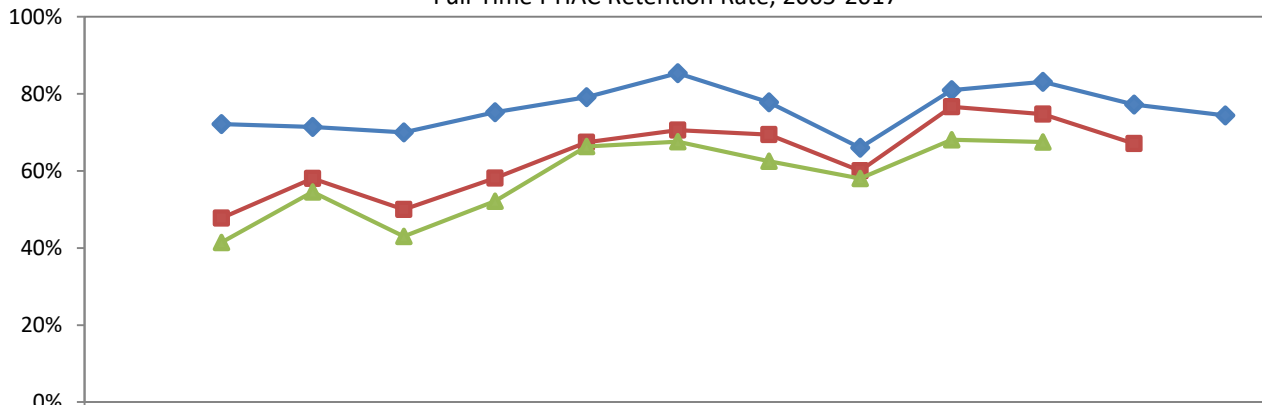
Full-Time FTIAC Retention Rate, 2005-2017



2nd Yr	72.2%	63.2%	63.6%	71.8%	68.7%	74.8%	72.7%	69.2%	71.5%	78.9%	81.4%	82.1%	80.4%
3rd Yr	56.7%	50.6%	52.4%	58.2%	51.2%	51.7%	65.6%	61.6%	59.9%	66.9%	67.3%	71.3%	
4th Yr	55.1%	45.9%	44.2%	49.5%	44.8%	43.5%	60.4%	56.2%	54.7%	60.2%	63.6%		

College of Education

Full-Time FTIAC Retention Rate, 2005-2017

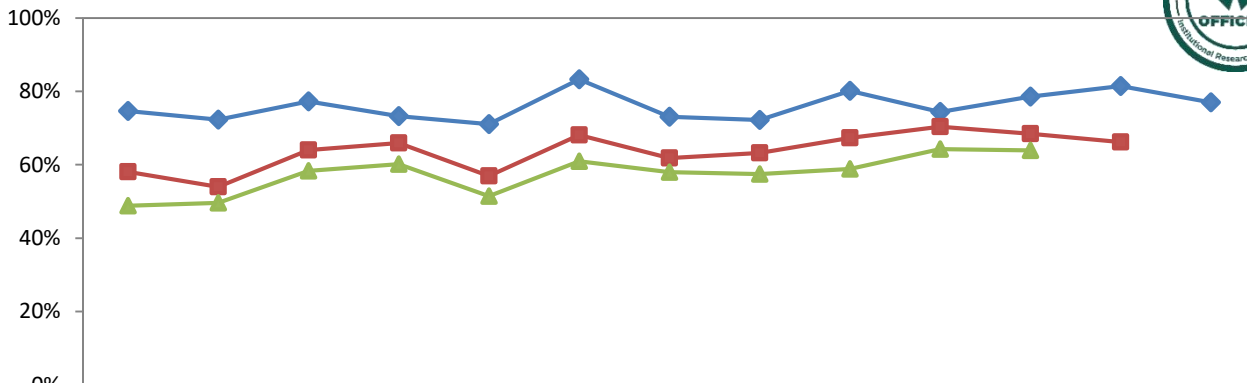


2nd Yr		72.1%	71.4%	70.0%	75.2%	79.1%	85.3%	77.8%	66.0%	80.9%	83.1%	77.2%	74.4%
3rd Yr		47.7%	58.0%	50.0%	58.1%	67.4%	70.6%	69.4%	60.0%	76.6%	74.7%	67.1%	
4th Yr		41.4%	54.5%	43.0%	52.1%	66.3%	67.6%	62.5%	58.0%	68.1%	67.5%		

*See Definitions in the end

College of Fine, Performing & Communication Arts

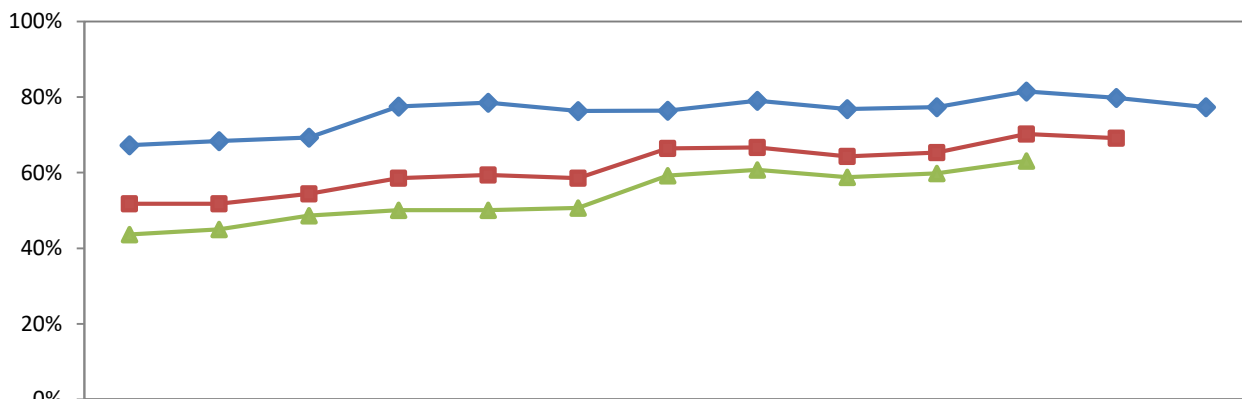
Full-Time FTIAC Retention Rate, 2005-2017



	2005	2006	2007	2008	2009	2010	2011	2012	2013	2014	2015	2016	2017
2nd Yr	74.7%	72.3%	77.3%	73.3%	71.1%	83.3%	73.1%	72.2%	80.2%	74.4%	78.6%	81.5%	77.0%
3rd Yr	58.1%	54.0%	64.0%	65.9%	56.9%	68.1%	61.8%	63.2%	67.3%	70.4%	68.5%	66.2%	
4th Yr	48.8%	49.6%	58.3%	60.2%	51.4%	61.0%	58.0%	57.5%	58.9%	64.3%	63.9%		

College of Liberal, Arts and Science

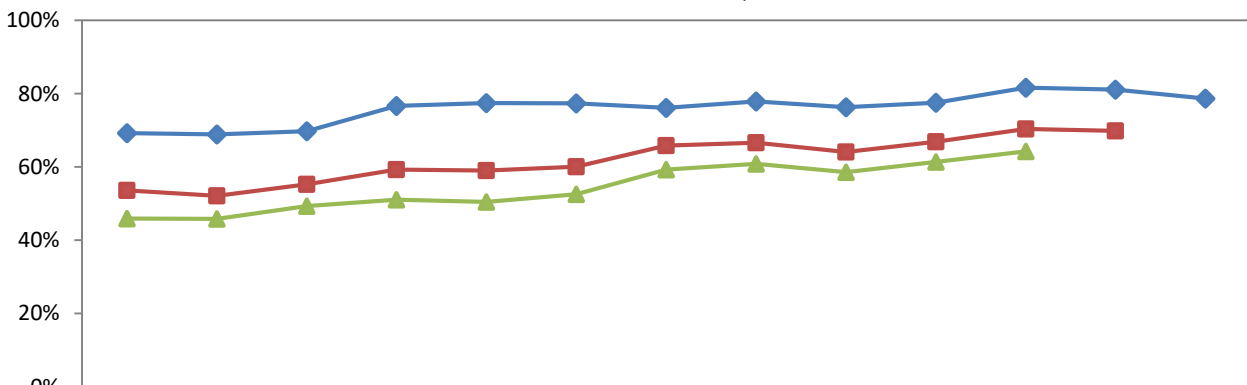
Full-Time FTIAC Retention Rate, 2005-2017



	2005	2006	2007	2008	2009	2010	2011	2012	2013	2014	2015	2016	2017
2nd Yr	67.3%	68.4%	69.3%	77.5%	78.5%	76.3%	76.4%	79.0%	76.8%	77.3%	81.5%	79.8%	77.3%
3rd Yr	51.8%	51.8%	54.4%	58.5%	59.4%	58.5%	66.4%	66.7%	64.3%	65.3%	70.2%	69.1%	
4th Yr	43.6%	45.0%	48.6%	50.1%	50.1%	50.7%	59.2%	60.7%	58.8%	59.8%	63.1%		

WSU Total

Full-Time FTIAC Retention Rate, 2005-2017



	2005	2006	2007	2008	2009	2010	2011	2012	2013	2014	2015	2016	2017
2nd Yr	69.2%	68.8%	69.7%	76.6%	77.4%	77.3%	76.1%	77.8%	76.3%	77.5%	81.6%	81.1%	78.6%
3rd Yr	53.6%	52.1%	55.2%	59.2%	59.0%	60.0%	65.8%	66.6%	64.0%	66.8%	70.3%	69.8%	
4th Yr	45.9%	45.8%	49.3%	51.0%	50.4%	52.5%	59.2%	60.8%	58.5%	61.3%	64.2%		

*See Definitions in the end



Timing Definition: The definition of “a year” is the 12-month period from the beginning of a fall term in one year to the beginning of the following fall term. The fall enrollment status is based on the official reporting date for the IPEDS fall enrollment report.

FTIAC (or First-time Freshman): (See IPEDS definition) “An entering freshman who has never attended any college. Includes students enrolled in the fall term who attended for the first time in the prior summer term. Also includes students who entered with advanced standing (college credits earned before graduation from high school).” Report only full-time, baccalaureate, first-time freshmen in this survey.

Retention Rates: Retention rate is the percentage of first-time, full-time freshmen in a given fall term who returned to the university in a subsequent fall term. For example, the “3rd Yr” retention rate for fall 2015 first-time, full time freshmen is the percentage of fall 2015 first-time full time freshman who returned for fall 2017. The calculation of retention rate does not include students who returned to the university after having graduated from the same university.

Reminder: As is the convention with IPEDS, data used for these calculations may be adjusted for students who departed for the following reasons: deceased, permanently disabled, or joined the armed forces (including those called to active duty from the Reserves or National Guard) or foreign aid service of the federal government or official church missions. These are allowable exclusions, and may be subtracted from the cohort prior to calculating the graduation rate.

Example: 3rd Yr retention rate calculation: $\text{Number in cohort who returned to 3}^{\text{rd}} \text{ year} / (\text{cohort headcount} - \text{the allowable exclusions})$.