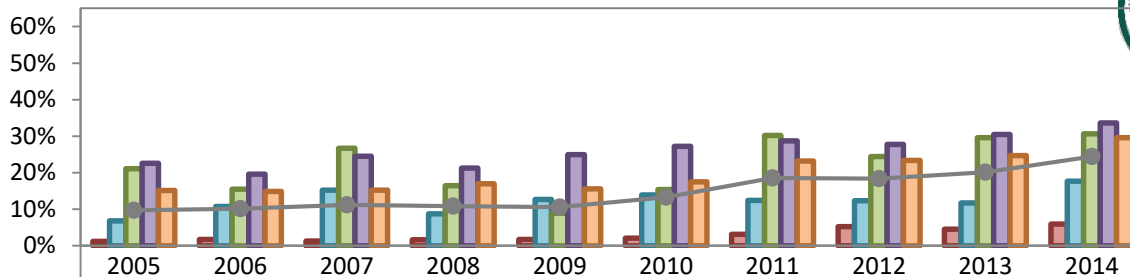


4 Year Graduation Rate*, By Race/Ethnicity

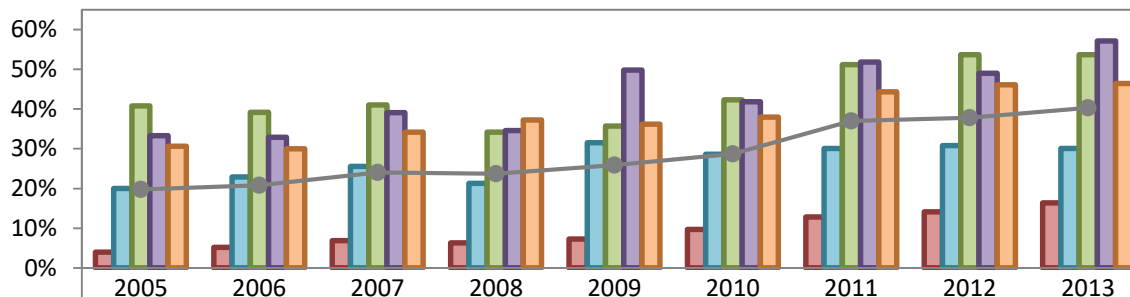
Full-time FTIAC* Cohort 2005-2014



	2005	2006	2007	2008	2009	2010	2011	2012	2013	2014
Black	1.2%	1.7%	1.3%	1.6%	1.7%	2.1%	3.1%	5.2%	4.5%	5.9%
Other*	6.8%	10.7%	15.2%	8.7%	12.7%	13.9%	12.4%	12.3%	11.7%	17.7%
NR Alien	21.1%	15.5%	26.7%	16.4%	8.9%	15.4%	30.2%	24.4%	29.6%	30.6%
Asian	22.6%	19.6%	24.5%	21.3%	24.9%	27.2%	28.7%	27.7%	30.5%	33.6%
White	15.1%	14.9%	15.2%	17.0%	15.6%	17.5%	23.2%	23.4%	24.7%	29.6%
● Total	9.7%	10.1%	11.2%	10.8%	10.6%	13.3%	18.5%	18.4%	20.1%	24.4%

5 Year Graduation Rate, By Race/Ethnicity

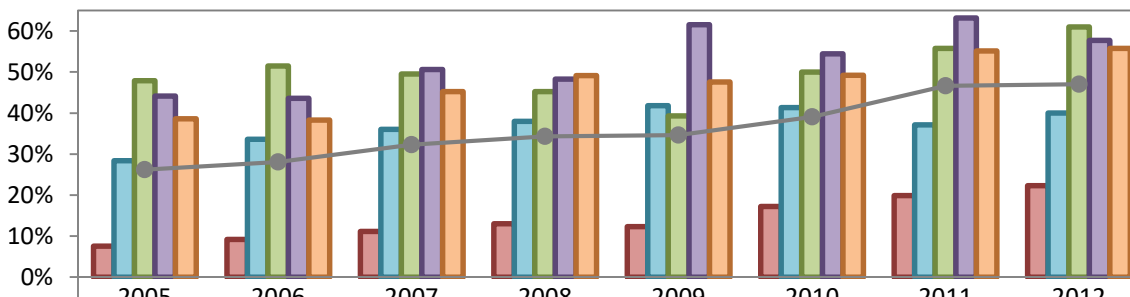
Full-time FTIAC Cohort 2005-2013



	2005	2006	2007	2008	2009	2010	2011	2012	2013
Black	4.0%	5.2%	6.9%	6.3%	7.3%	9.7%	12.8%	14.1%	16.4%
Other*	20.0%	22.9%	25.6%	21.3%	31.5%	28.6%	30.1%	30.8%	30.1%
NR Alien	40.8%	39.2%	41.0%	34.2%	35.7%	42.3%	51.2%	53.7%	53.7%
Asian	33.3%	32.9%	39.1%	34.6%	49.8%	41.8%	51.8%	49.0%	57.1%
White	30.6%	30.0%	34.2%	37.2%	36.2%	38.0%	44.3%	46.1%	46.4%
● Total	19.8%	20.8%	24.0%	23.7%	25.9%	28.7%	37.0%	37.8%	40.3%

6 Year Graduation Rate, By Race/Ethnicity

Full-time FTIAC Cohort 2005-2012



	2005	2006	2007	2008	2009	2010	2011	2012
Black	7.5%	9.2%	11.1%	13.0%	12.3%	17.2%	19.9%	22.3%
Other*	28.4%	33.6%	36.0%	38.0%	41.8%	41.3%	37.1%	40.0%
NR Alien	47.9%	51.5%	49.5%	45.2%	39.3%	50.0%	55.8%	61.0%
Asian	44.1%	43.6%	50.6%	48.3%	61.5%	54.4%	63.2%	57.7%
White	38.6%	38.3%	45.2%	49.1%	47.6%	49.2%	55.1%	55.8%
● Total	26.2%	28.1%	32.3%	34.3%	34.6%	39.1%	46.6%	47.0%

*See Definitions in next page



Timing Definition: The definition of “a year” is the 12-month period from the beginning of a fall term in one year to the beginning of the following fall term. The fall enrollment status is based on the official reporting date for the IPEDS fall enrollment report.

FTIAC (or First-time Freshman): (See IPEDS definition) “An entering freshman who has never attended any college. Includes students enrolled in the fall term who attended for the first time in the prior summer term. Also includes students who entered with advanced standing (college credits earned before graduation from high school).” Report only full-time, baccalaureate, first-time freshmen in this survey.

Graduation Rates: Graduation rate is the cumulative percentage of first-time, full-time freshmen in a given fall term who graduated within a designated period of time. For example, the “5 Year Graduation Rate” for fall 2012 first-time, full time freshmen is the percentage of fall 2012 first-time full time freshmen who graduated from the university by the fall 2017 term including those students who completed their courses during the summer of 2017.

Reminder: As is the convention with IPEDS, data used for these calculations may be adjusted for students who departed for the following reasons: deceased, permanently disabled, or joined the armed forces (including those called to active duty from the Reserves or National Guard) or foreign aid service of the federal government or official church missions. These are allowable exclusions, and may be subtracted from the cohort prior to calculating the graduation rate.

Example: 4 Year Graduation Rate calculation: $\text{Number in cohort who graduated within 4 years} / (\text{cohort headcount} - \text{the allowable exclusions})$.

Race/Ethnicity: **Black** refer to Black or African American; **Other** include Unknown, Hispanic, American Indian/Alaskan Native, Two or more races; **NR Alien** refer to Nonresident Alien; **Asian** refer to Asian or Pacific Islander; **White** refer to White, Non-Hispanic.