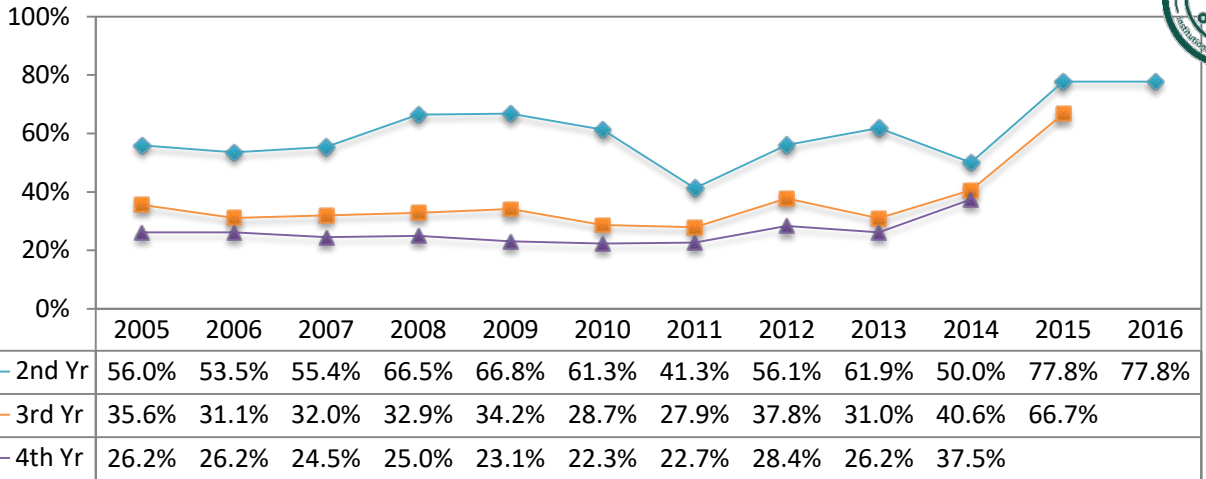


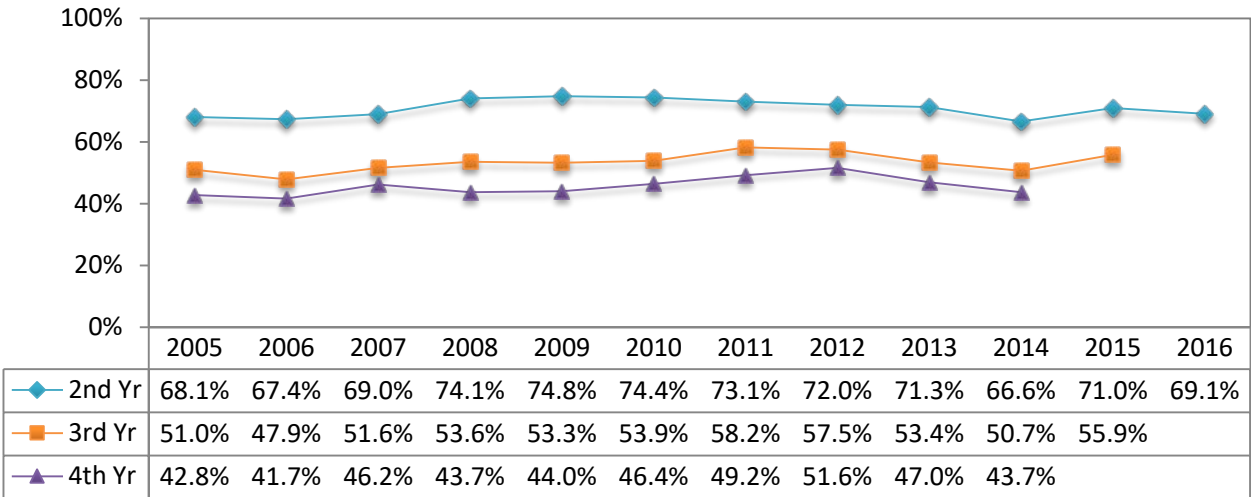
### ACT Below 16

Full-Time FTIAC Retention Rate, 2005-2016



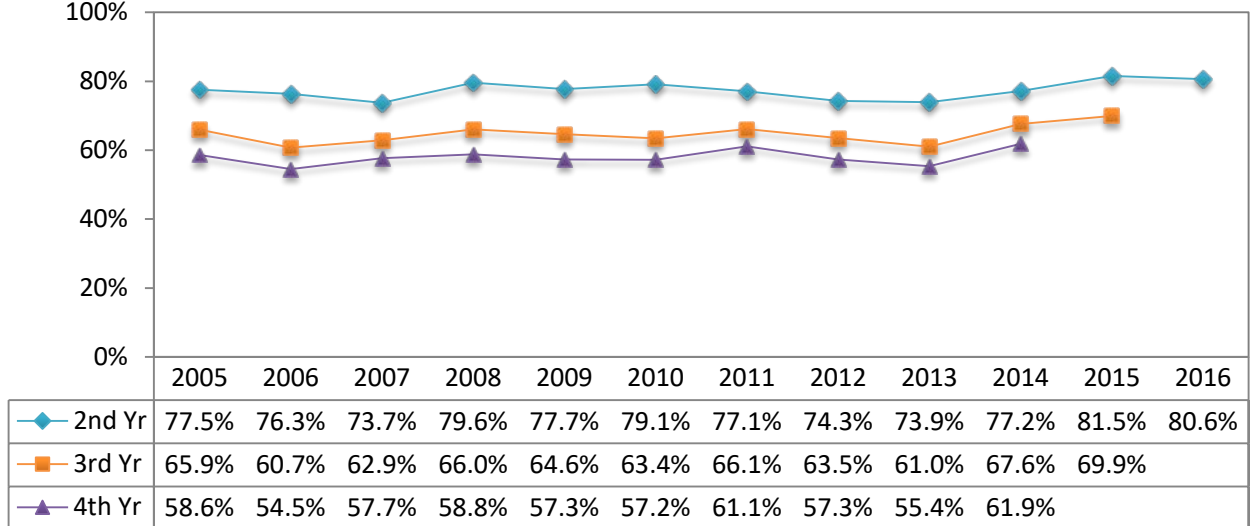
### ACT 16-20

Full-Time FTIAC Retention Rate, 2005-2016



### ACT 21-24

Full-Time FTIAC Retention Rate, 2005-2016

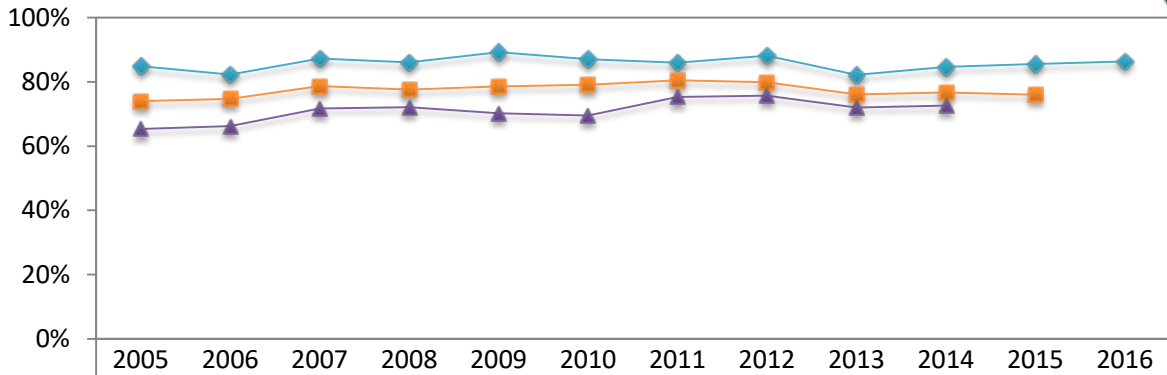


\*See Definitions in the end



### ACT 25-29

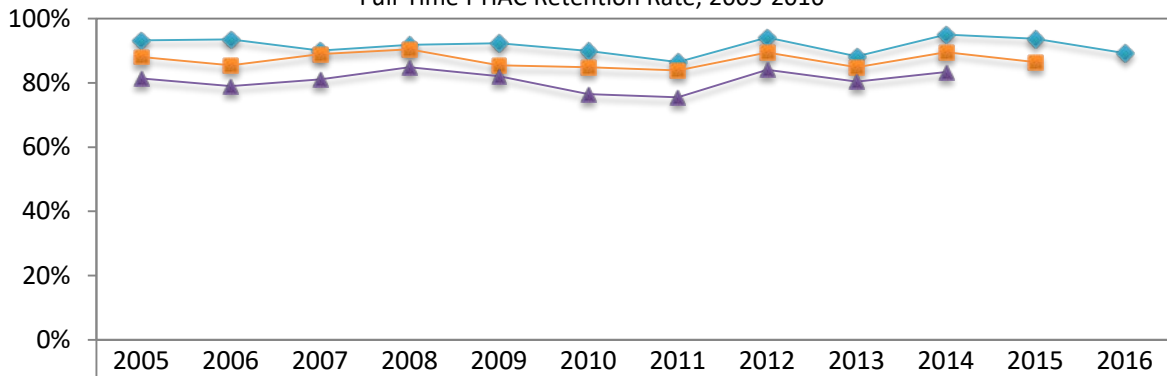
Full-Time FTIAC Retention Rate, 2005-2016



◆ 2nd Yr	84.9%	82.3%	87.3%	86.1%	89.2%	87.1%	86.0%	88.2%	82.2%	84.7%	85.6%	86.4%
■ 3rd Yr	74.0%	74.7%	78.7%	77.6%	78.6%	79.1%	80.5%	79.9%	76.1%	76.7%	76.0%	
▲ 4th Yr	65.3%	66.2%	71.7%	72.1%	70.2%	69.5%	75.3%	75.7%	72.0%	72.6%		

### ACT 30 and above

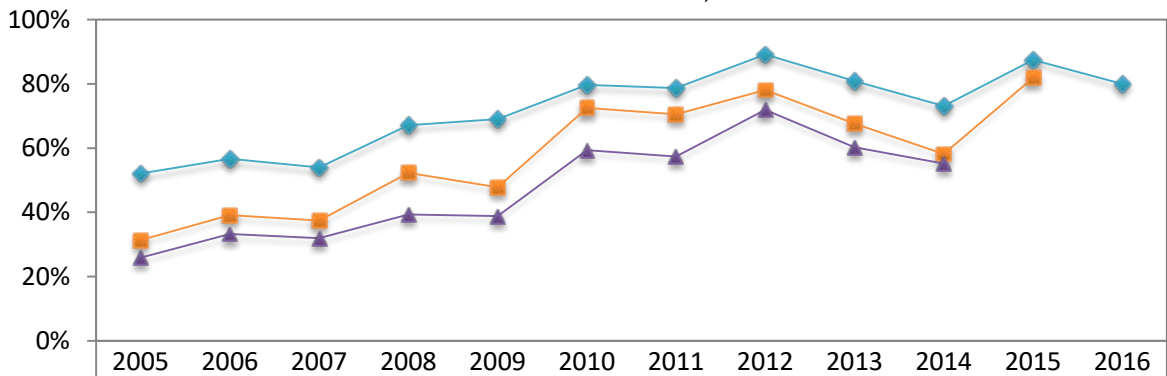
Full-Time FTIAC Retention Rate, 2005-2016



◆ 2nd Yr	93.2%	93.5%	90.0%	91.8%	92.3%	89.9%	86.5%	94.1%	88.3%	95.0%	93.7%	89.2%
■ 3rd Yr	88.1%	85.5%	88.9%	90.4%	85.5%	84.9%	83.9%	89.4%	84.9%	89.5%	86.5%	
▲ 4th Yr	81.4%	79.0%	81.1%	84.9%	82.1%	76.5%	75.5%	84.1%	80.4%	83.4%		

### No ACT

Full-Time FTIAC Retention Rate, 2005-2016



◆ 2nd Yr	52.1%	56.7%	54.0%	67.1%	69.0%	79.7%	78.7%	89.1%	80.9%	73.1%	87.5%	80.0%
■ 3rd Yr	31.4%	39.2%	37.5%	52.3%	47.8%	72.5%	70.5%	78.1%	67.6%	58.2%	81.9%	
▲ 4th Yr	25.9%	33.3%	32.0%	39.4%	38.9%	59.4%	57.4%	71.9%	60.3%	55.2%		



**Timing Definition:** The definition of “a year” is the 12-month period from the beginning of a fall term in one year to the beginning of the following fall term. The fall enrollment status is based on the official reporting date for the IPEDS fall enrollment report.

**FTIAC (or First-time Freshman):** (See IPEDS definition) “An entering freshman who has never attended any college. Includes students enrolled in the fall term who attended for the first time in the prior summer term. Also includes students who entered with advanced standing (college credits earned before graduation from high school).” Report only full-time, baccalaureate, first-time freshmen in this survey.

**Retention Rates:** Retention rate is the percentage of first-time, full-time freshmen in a given fall term who returned to the university in a subsequent fall term. For example, the “3<sup>rd</sup> Yr” retention rate for fall 2015 first-time, full time freshmen is the percentage of fall 2015 first-time full time freshman who returned for fall 2017. The calculation of retention rate does not include students who returned to the university after having graduated from the same university.

**Reminder:** As is the convention with IPEDS, data used for these calculations may be adjusted for students who departed for the following reasons: deceased, permanently disabled, or joined the armed forces (including those called to active duty from the Reserves or National Guard) or foreign aid service of the federal government or official church missions. These are allowable exclusions, and may be subtracted from the cohort prior to calculating the graduation rate.

**Example:** 3<sup>rd</sup> Yr retention rate calculation:  $\text{Number in cohort who returned to 3}^{\text{rd}} \text{ year} / (\text{cohort headcount} - \text{the allowable exclusions})$ .